

Raymond Jennings



My current line of work is the exploration of human interiors . . . as expressions of human psychology and the historically varied styles of architectural design, both structurally and as surface adornment, that also is full of human symbolism.

My paintings, drawings and sculpture are a positive expression of our world in form and colour, motion and character, radiance, and depth, with the energies of universal inspiration.

I paint with oil paints on 15oz cottonduck canvas stretched over wood frames that I make myself. The canvas is sealed with rabbit-size, then with oil-based primer-undercoat paint.

I draw up the paintings free-hand directly from my idea-drawings, imagination and reference photos, so as to maintain my own spontaneous qualities of character and the natural irregularities of line, form and colour/paint textures necessary for the paintings to feel ‘alive.’

The inspiration for my architectural interiors come through my process of living, discovering new people and places, as well as purposely searching for and enquiring after particular kinds of interiors – for example . . . the New Zealand bach or beach-house.

Also, any pictorial form, such as books and magazine can occasionally stand out as a significant subject for expression.

I will continue to explore human-living interiors as portraits of the people living in them. I allow my direction to develop naturally without forcing it prematurely into new possibilities, but I do see a bolder and even more decisive and powerful approach coming, with more imaginative colour combinations and the introduction of other elements plus the changing of the architectural structure. Exploring the various functional forms of home architecture and their various historical styles and ideas as places still lived in within our contemporary world.

Artist Statement

Born in New Zealand in December 1952, Raymond Jennings began painting and exhibiting at the age of twelve. Two years later his work featured in a nationwide Society of Arts touring exhibition. Raymond also painted a 20m mural inside Kamo High School library, Whangarei.

He studied at Elam School of Fine Arts at Auckland university graduating in 1975.

Raymond's illustrious career has seen him exhibit in numerous solo and group shows throughout New Zealand, in the USA and Singapore. He has produced large-scale commissions for business and private clients, for the Peninsula/Excelsior Hotel in central Singapore, and also monumental stage sets for the New Zealand Wearable Arts Shows.

Raymond is a multi-disciplinary artist working primarily in painting, but also in sculpture extending into architectural design; with a new development being the creation of children's picture story books. His work carries a positive dynamic energy . . . with expert colour combinations, light and dark contrast, a strong sense of form and movement, together with an expansive multi-dimensional spatial understanding; generated by an inspiration that is both worldly and universal.

Biography

Bio - cont

'A theatrical childhood, with both parents acting and producing plays, my father also being an eccentric physics teacher, and a family friend being a prominent architect, all, introduced me to creative expression. Then, being introduced to oil painting on canvas at age eleven, with exhibitions and sales of work soon after confirmed my direction as an artist.

Throughout my life a great variety of adventures including long distance cycling tours and mountain hiking, and places lived in, have developed and maintained my expansive and positive imagination and energy. Challenging projects offered to me, and consistently strong responses from galleries have all supported me in my creative endeavour.'

Exhibition CV

See additional PDF

Following are some images of my latest Interior paintings, which typify the direction I am currently focusing on.

1. Portrait of an Interior - 2010

Medium: oils on canvas

Size: 1500mm x 1050mm

Sold to James Wallace Charitable Arts Trust

2. Sculptor's Interior - 2010

Medium: oils on canvas

Size: 1600mm x 925mm

Sold to private collector

3. Rannoch Interior - 2011

Medium: oils on canvas

Size: 1500mm x 850mm

Sold to James Wallace Charitable Arts Trust

4. New Zealand Bach Interior - 2011

Medium: oils on canvas

Size: 1400mm x 820mm

Sold to private collector

5. New Zealand Cottage Interior - 2011

Medium: oils on canvas

Size: 1220mm x 830mm

Sold to private collector

6. New Zealand Art Collector's Interior - 2011

Medium: oils on canvas

Size: 1400mm x 820mm

7. Great Barrier Island Bach Interior - 2011

Medium: oils on canvas

Size: 1500mm x 850mm

Sold at the Auckland Art Fair 2011

8. Northland Bach Interior - 2011

Medium: oils on canvas

Size: 1300mm x 890mm

9. Rannoch – The Power of Expression – NZ Art - 2011

Medium: oils on canvas

Size: 2500mm x 1500mm

10. Christo's Studio, New York City 1988 - 2011

Medium: pencil, oil-colour wash, varnish-wash on stretched canvas

Size: 1300mm x 850mm

11. Beach House at Piha - 2011

Medium: oils on canvas

Size: **1290mm x 960mm**

12. Luminous Interior - 2011

Medium: oils on canvas

Size: **1500mm x 950mm**

13. Creative Interior - 2011

Medium: oils on canvas

Size:

14. Bach Interior at Piha - 2011

Medium: oils on canvas

Size:



1. Portrait of an Interior - Home of the director/creator of the New Zealand Wearable Art Show, Suzie Moncrieff. The three sofas are the key objects of living within this interior – all else revolves around them – the three thrones of comfort, conversation, contemplation . . . with ideas in creation. The Cardinal and George Washington drawings on the wall . . . as silent residents of the living room . . . silent eyes overseeing the creative conversations. The painting of a TREE in the middle distant room is one of mine from 1993 – an interesting extra dimension to this painting.



2. Sculptor's Interior - Home of the artist Llew Summers, a New Zealand sculptor. A checker-board jumble of a sculptor's home interior, with stone and clay human figures, and his collection of paintings by other artists. Motions of memory, objects collected become compositions for our present company. Our home interiors become museums in creation, expressive of human character. The slight twist of the floor and shelf gives a movement into the distance – a flow of light from outside the window through the whole room and joining up with the kitchen window. Everything in this interior is a symbol of human presence.



3. Portrait of an Interior - Portrait of Rannoch house, the home and concert hall of New Zealand's largest art collection owned by Sir James Wallace. A luminous, splendid combination of contemporary art and old architecture . . . and the chairs always holding the presence of people.



4. New Zealand Bach Interior - A portrait of a New Zealand beach bach built in the 1930s and maintained in its original form and colours, with the addition of collectables and furniture form of the 50s, 60s and 70s. A simple weekend haven for a couple of university lecturers. Chairs hold the presence of people. Forms of space lead through on the musical lines of the floorboards into other rooms and into the darkness inside the fireplace and cupboard . . . a balance of mystery and lightness.



5. New Zealand Cottage Interior - A classic New Zealand country cottage, small and compact. The picture above the fireplace portrays the owners of the cottage that I have added as a feature of information. The window with its view to the outside, beside a mirror reflecting back inside is an example of my play on time and space.



6. Art Collector's Interior - The London home of a well-known New Zealand art collector.

A rich simplicity of space . . . with an elegant quality of colour. The chairs face in various directions relating to the walls and paintings and creating a generous dimension of space. Contemporary art within an old style of architecture, contrasting and dynamic.



7. Great Barrier Island Bach 2011 - Home base of a New Zealand travel writer, this bach built in the 1910s is in its original condition, well-maintained and well-weathered. This interior exhibits some iconic kitchen collectables, together with ethnic masks and vessels from Africa and tropical island cultures. Windows, like pictures on the wall, open out all around to the expansive spread of a native coastal pohutukawa tree . . . with the ocean horizon as a line of reference and connection to the outside world beyond this personalized interior haven. Comfortable muted colours contrast with the brilliant blue and teal greens as a luminous reflection of the space of summer's sky above.



8. Northland Bach Interior 2011 – or beach house, with its architectural simplicity, original 1950s colour scheme and abstract shapes of shadows and shade open to the free light of ocean and sky.



9. Rannoch – The Power of Expression – New Zealand Art 2011 - Home and concert hall of arts patron Sir James Wallace and his expansive collection of New Zealand art. An historic architectural and contemporary-creative experience with its musical atmosphere and artist presence and its invitation to wander, exploring the rooms and multiple levels all filled with art.



10. Christo's Studio, New York City 1988 - An expression of the mysterious – enchanting, solitary and productive atmosphere of this studio ... with rolls and stacks of paper, and drawings covering the walls rendered with pencil and colour wash, with varnish, to hold the effect of the muted light from the muted windows, and giving the overall suggestive quality for our mind and imagination to find some definition and intrigue.



11. Beach House at Piha 1290mm x 960mm - A small cozy house overlooking Piha beach ... with paintings by Rita Angus, Don Binney, Nigel Brown and Colin McCahon, as connections to our country's culture and history, beyond the immediate relative isolation of this coastal location.



12. Luminous Interior - The heart of the fire – giving the colours to this painting together with the lights around the tall mirror.. and the plants dynamic in their green darkness, contrast with, and accompany the dancing flames. The outside light through the trees and window complete the trilogy – sun, electric and fire light. The faces in the Dolezel painting, give an eccentric human presence.



13. Creative Interior - Oils on canvas Size: 1500mm x 1000mm



14. Bach Interior at Piha – A small cozy house overlooking Piha beach ... with paintings by Rita Angus, Don Binney, Nigel Brown and Colin McCahon, as connections to our country's culture and history, beyond the immediate relative isolation of this coastal location.

'Looking West Award - Revell Family Trust'

'It was a joy to spend time with this painting, as if sitting in a chair on the other side of the room taking in its wide-angled delight in the detail of daily Bach life. It contains some wonderfully chromatic moments, visual plays within plays.'

Oils on canvas Size: 150mm x 750mm



15. **The Map Readers** - Oils on canvas Size: 680mm x 900mm



16. Water Lily with monoprint by Denys Watkins - A water lily bloom against mono-printed images of Easter Island by Denys Watkins. The naturalistic association of a present day flower as a beacon of light with the cultural images of an historically and geographically distant island. Oils on canvas Size: 1000mm x 750mm



17. West Coast Cottage – Oils on canvas Size:1300mm x 750mm



18. Bethells Beach Bach - Oils on canvas Size: 1000mm x 500mm



19. New Zealand Beach Interior – Oils on canvas Size: 1500mm x 820mm



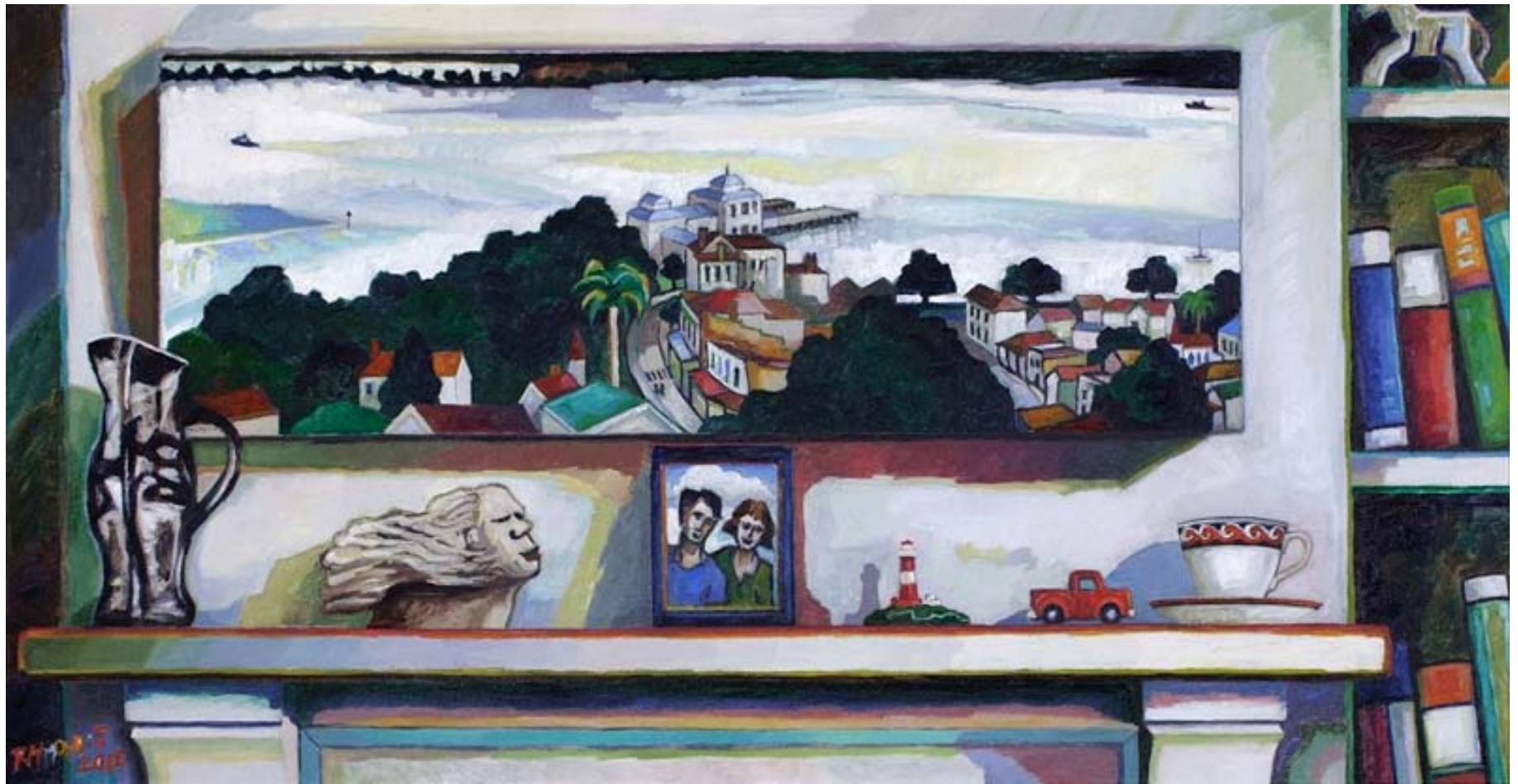
20. Old Bach at Pataua – Oils on canvas Size: 850mm x 600mm



21. Pottery Studio – Pencil & oil colours with varnish wash Size: 1100mm x 530mm



22. The Basic Bach – Oils on canvas Size: 850mm x 600mm



23. Outside- Inside Devonport – Oils on canvas Size: 1000mm x 500mm



24. Shelf Life with Mt. Eden – Oils on canvas Size: 1060mm x 460mm



25. Shelf Life – Oils on canvas Size: 1050mm x 490mm



26. Ollie's Cottage – Oils on canvas Size: 100mm x 750mm



27. Robot Interior - Oils on canvas Size: 1500mm x 830mm